

SENIOR MANAGEMENT



"Lattimer has remained at the forefront of the 'design and build' of IS variable equipment, components and assemblies for the glass container manufacturing industry ever since our major breakthrough in 1977. However, this has required energy, ambition and resource. We have always taken pride at our ability to design and manufacture innovative products which keep us ahead of the competition, making us the IS variable equipment supplier of choice for OEMS, glass manufacturing groups and independent plants."

- Lattimer Holdings CEO Stephen Waterhouse



"Today we export to all four corners of the world, from Asia, Africa and Europe to the Americas and Australia. We manufacture more than 20,000 component parts, through a number of different machining processes including milling, turning, mill-turning and grinding. As a result, Lattimer is now in a stronger position than ever before in its 76-year history, with growing order books and a world-wide reputation for engineering excellence. In order to maintain our reputation as a world-leading engineering company we made a decision five years ago to invest in our own internal training academy. Our highly skilled engineers are the backbone of our business. The Lattimer Training Academy has enabled us to take the initiative and fully manage our own engineering resource development. We are passionate about local skills development and knowledge transfer from our most experienced team members so that we can continue to supply the range of high quality products our customers expect."

- Lattimer UK Managing Director Mark Hailwood

Lattimer Clients



CONTACT US

If you are purchasing IS variable equipment for any type of machine, either standard or special, new or old, if you have a problem or an issue that needs addressing then you should be speaking to Lattimer. Contact the Lattimer sales team either by email or phone and they will be delighted to assist you.

Lattimer UK

79-83 Shakespeare Street, Southport,
PR8 5AP, UK
Tel +44 (0) 1704 535040
Email: sales@lattimer.com

Lattimer USA

3603 North Mill Road, Vineland, New Jersey,
08360, USA
Tel +1 (0) 856 691 2203
Email: salesamericas@lattimer.com



LATTIMER

The World's leading IS Variable Equipment Supplier

INTRODUCTION

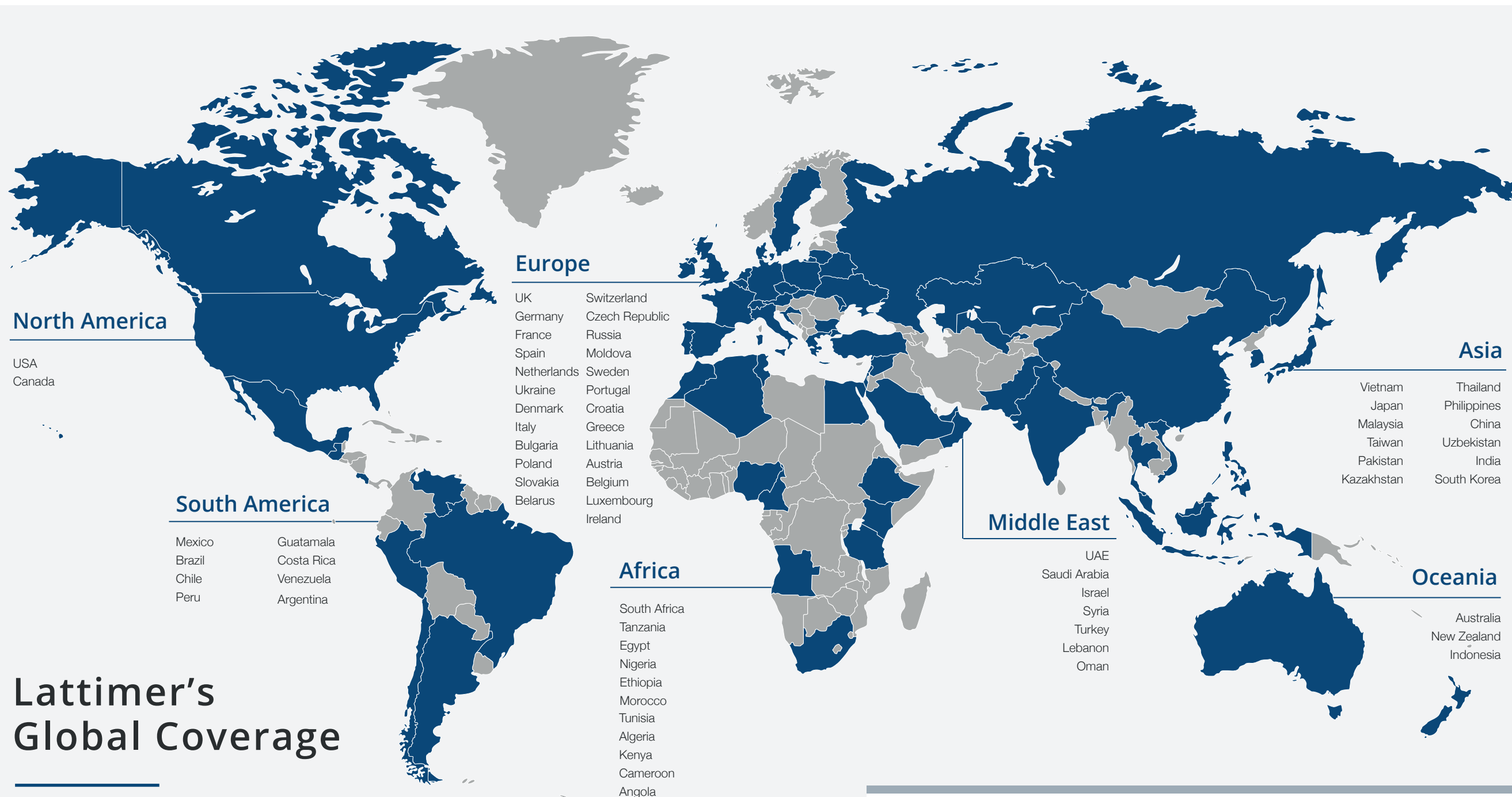
Lattimer is the world's leading IS variable equipment supplier with facilities in Southport, North West UK and New Jersey, USA, manufacturing more than 26,000 parts for machines used in the manufacture of glass containers. In 2018, we were recognised as a champion exporter after securing the Queen's Award for Enterprise with overseas contracts now accounting for more than 90pc of all sales. Lattimer exports to all four corners of the globe with key markets including Asia, Africa, Europe, North America, South America and Australia and is the supplier of choice for IS variable equipment for many of the worlds OEMS, glass manufacturing groups and independent plants.

"Lattimer is the world's leading supplier of IS variable equipment, trusted to supply standard and bespoke equipment to glass container manufacturers in every corner of the globe"

Lattimer Chronology

- 1942** Lattimer UK founded as a general engineering company and develops a strong reputation as a solid British manufacturer over decades
- 1970s** Major breakthrough as Lattimer assists a local glass container company solving a problem in their production process. The solution was so successful it inspired Lattimer to develop other products for the worldwide market
- 1977** Grows to be a world leader in the supply of IS 'variable equipment' after successes through the original Lattimer 'Pusher' and 'Belt Arm'
- 1985** Acquires IS Parts International of New Jersey USA
- 1999** Acquires WYE (West Yorkshire Engineering) to expand product range and presence in the glass container manufacturing industry
- 2007** Lattimer becomes private company wholly owned by the current management team
- 2018** Lattimer receives Queens Award for Enterprise for International Trade after showing 'steep' international sales growth over the past three years





Lattimer's Global Coverage

The Numbers That Count

-  **60 plus** Countries supplied
-  **Over 26,000** Parts manufactured
-  **£12.3million** Group Turnover
-  **29%** Exports to European markets
-  **120** Employees
-  **16** Current number of apprentices
-  **40%** Number of staff trained through Lattimer apprenticeships
-  **Over 90%** Exports as percentage of total sales
-  **40 years** Operating at the forefront of design and manufacture of components and assemblies for the glass container industry

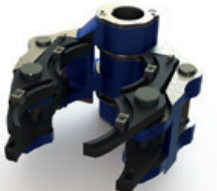
Product Breakdown & Manufacturing Techniques

Lattimer is able to supply all IS variable equipment requirements in all product families. Many of Lattimer's products have led the field in innovation and have subsequently become industry standards, specified and recommended by companies worldwide. We are able to engineer, design and manufacture special parts addressing your specific issues, working with you throughout the process to ensure that you are happy with the result.

Our years of experience and thousands of parts supplied each year set us apart from our competition. From our Neck Ring Mechanisms, Mould Holders, Neck Ring Arms, Blowheads, Tong Heads and Take Out Arms to name only a few, to our extensive range of Spare Parts and our Checking Fixtures that ensure your machines are set up for trouble free production of high quality products. Lattimer, synonymous with quality, consistency, innovation and reliability is a name you can rely on to supply all your IS variable equipment requirements. Call us now.



Neck Ring Mechanisms



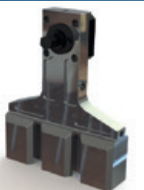
Mould Holders



Neck Ring Arms



Blowheads



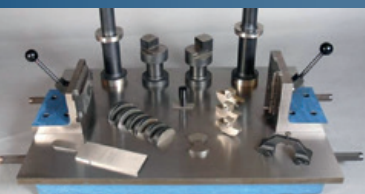
Tong Heads



Take Out Arms



Spare Parts



Checking Fixtures