

INNOVATE

NEWS FROM LATTIMER

'THE WORLD LEADER IN IS VARIABLE EQUIPMENT'

IN THIS ISSUE

DIGITAL WORKSTATIONS

CHECKING FIXTURES

COUNTRY FOCUS - THAILAND

EVGENIY JOINS THE US SALES TEAM



Welcome Back

Welcome to the second edition of Lattimer's quarterly newsletter, Innovate.

In this month's edition to follow on from our hugely successful Neck Ring Mechanism we are featuring our Invert Mechanism which has a number of significant improvements over the OEM versions.

We are also beginning our feature of our Agents across the globe, beginning with Patrick and his team at GRT in Bangkok, Thailand.

To further reinforce our total commitment to Quality, the roll out of our new computer measuring, recording and reporting system is explained by Donna Morgan, our Quality Manager.

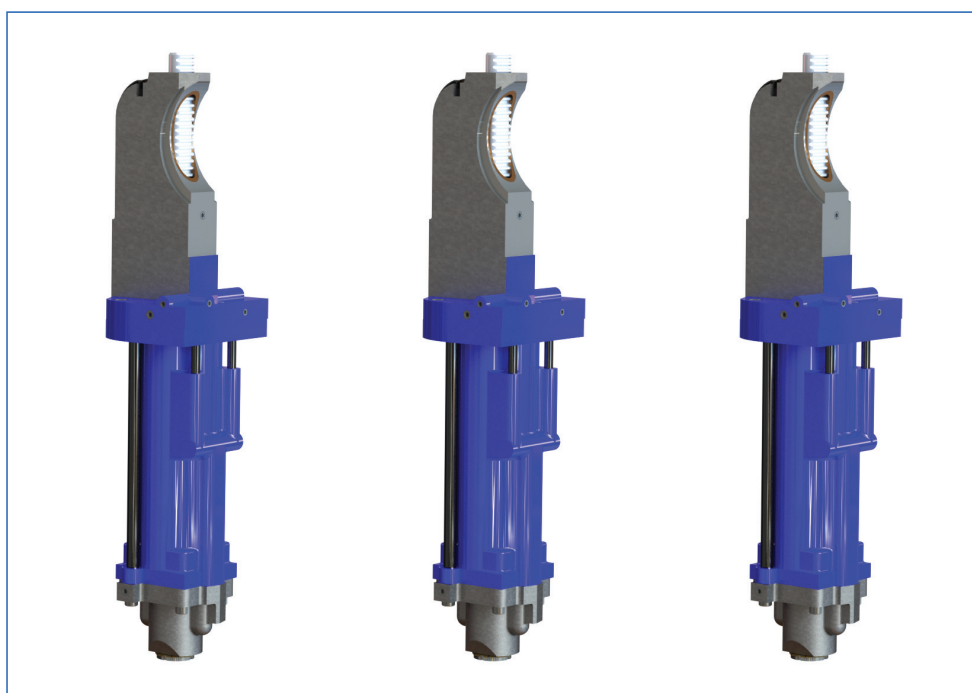
I hope you enjoy this copy of Innovate, and feel free to drop us a line if there is something you wish to be included in subsequent editions.

Mark Hailwood CEng FIMechE
Managing Director

Invert Mechanism

Another winner from Lattimer

Following on from the success of the Lattimer Neck Ring Mechanism, the Design and Manufacturing Engineering departments have been busy putting the finishing touches to the Lattimer Invert mechanism.



Constant Cushion Invert Mechanism

Reliability, longevity and resistance to wear

Designed to be exchangeable with the majority of Emhart units, this mechanism has been designed to address some of the commonly observed issues of those provided with the new machines. Namely the reliability and longevity of the Invert and Revert damping as well as wear issues

experienced in the centre cylinder. We are confident that our experience of materials, manufacturing processes and treatments and our knowledge of the Glass container manufacturing industry have delivered us a part that will stand the test of time, a mechanism with the quality worthy of the Lattimer name.

THE LATTIMER QUICK CHANGE BLOWHEAD

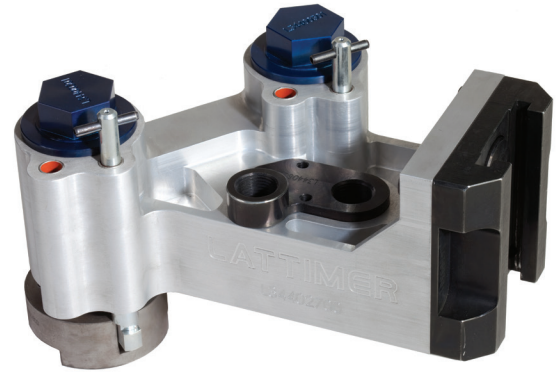
A robust, lightweight Blowhead, manufactured from aerospace grade aluminium alloy.

Benefits include:

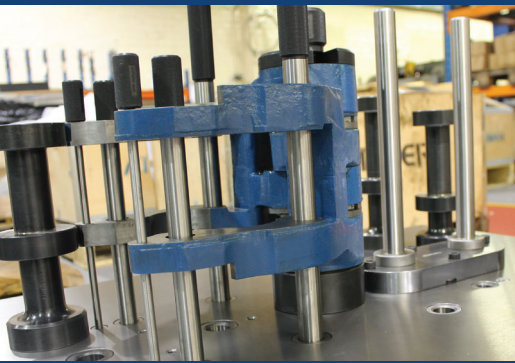
- Steel QC adaptor with increased clamping area, delivering increased clamping force and eliminating casting failure.
- Replaceable steel inserts preventing torn threads from pneumatic connectors.
- Pneumatic pipe adaptors positioned to reduce drag.
- Removable 'airway' caps for cleaning.

The Lattimer QC Blowhead is widely recognised as the best QC Blowhead on the market and has been adopted as standard by many organisations.

Contact your Account Manager for further details.



LATTIMER CHECKING FIXTURES



To ensure that IS variables are set up correctly and within specification before being installed on the IS machine, Lattimer are able to supply a wide range of checking and alignment fixtures across a range of products.

Many organisations have adopted these precision Lattimer fixtures as their standard ensuring that their machine set ups are consistent and correct. Each fixture is manufactured specifically for each product and customer so you can be 100% confident in the consistency and quality of your machine set ups.

Standardisation, Quality and Confidence

A recent order has delivered identical Lattimer Tong Head Alignment fixtures to plants in three countries. These plants have been instructed to ensure the Tong Head has been set up correctly before installation on the IS machine by confirming this on the Lattimer Tong Head Alignment fixture, standardising across plants, guaranteeing quality and giving the customer the confidence that the machine is set up correctly.

Lattimer Checking Fixtures are available for Mould Holders, Take Out Arms, Tong Heads, Neck Ring Arms and Inserts, in a large range of sizes, other special fixtures are available on request.

Contact your Lattimer Account Manager for further information.



LOCK RINGS

With many variations and requirements the value of the simple Lock Ring is a part often ignored.

Lattimer's investment in machine tools has resulted in the capability to manufacture a complete lock ring, whatever the shape or size, from a single material billet without operator intervention, leaving only the treatment and grinding operations to be completed before shipping to the

customer. Lattimer manufacture a huge range of lock rings, from industry standard to specials with specific features included for individual plants or container manufacturing groups. Contact a member of the sales team for a quotation for all your Lock Ring requirements.

MOULD HOLDERS

For many years Lattimer have been at the forefront of Mould Holder manufacture, with a huge range of standard and special Blank and Blow holders to choose from there is no reason to go elsewhere.

For many years Lattimer have supplied our own and the full range of WYE (West Yorkshire Engineering) mould holders, cast from 600/3 cast iron, these holders are not only durable and strong but are manufactured to the tightest of tolerances ensuring that your requirements are satisfied.

If you are moving your moulds from one machine size to another then our technical teams in the UK and the US are able to specify and design the holder and insert combination to suit your precise requirements. Whatever your Blank or Blow Mould holder requirements contact the Lattimer sales team who will be delighted to assist you.



NEW DIGITAL WORKSTATIONS

Lattimer are now installing a number of digital data acquisition workstations across the site.

The benefits of using this type of system include:

- Full traceability of parts and measurements
- Live in-process data
- Improved productivity
- Simple data retrieval

Future developments include:

- Part and machine set up instructions
- Standard operating/ manufacturing procedures
- Inspection protocols/ Gauging guidance
- Product Quality alerts

This initiative is being driven by our Quality Manager, Donna Morgan and is an example of Lattimer's commitment to provide the highest standard of product and service.

NECK RING ARMS

Lattimer are able to manufacture a wide range of Neck Ring Arms to suit specific requirements in single, double, triple and quad gob.

Standard arms are manufactured from Cast Iron however Steel arms can also be manufactured and induction hardened in areas to significantly reduce wear during operation. Arms can be supplied in a wide range of sizes, straight or offset, standard or with replaceable wear parts in a number of the wear areas, as well as offering many types of locks and leaf springs.

We are also able to modify your existing Neck Ring Arms to accept a new Lattimer Spring, unavailable from any other supplier which is now being offered for trial.

Contact your Account Manager for more information.



Country Focus: Thailand GRT



GRT represent the Lattimer brand in Thailand, based in Bangkok, the small but effective team of Patrick, Oranuch and Kittisak are responsible for Lattimer sales and support in the region.

Before joining GRT Patrick had worked in the glass container industry for 26 years, joining GRT in 2012 whilst Oranuch was already familiar with the business having joined in 2006, becoming office manager in 2011.

Oranuch keeps the office organised and running like a well oiled machine, while the newest employee, Kittisak, who joined 2015 is currently being trained in customer sales and service, and is already proving to be an excellent addition to the team.

Having increased sales of Lattimer products in 2018 GRT will be looking to continue this increase into 2019. We have every confidence that the hard work, commitment and perseverance shown by Patrick and his team will continue to deliver market success in Thailand for Lattimer.

For all Lattimer enquiries in Thailand contact Patrick and his team at:

GRT Limited, 152 Soi Soonvijai 14, Banggapi Sub-District, Huaykwang District, BANGKOK 10310 THAILAND
patrick.poinsot@grt.co.th



Evgeniy Rovenko

Evgeniy joins the US Sales Team

After several years as a Lattimer agent in the Ukraine and Russia, Evgeniy Rovenko has moved to the US to join the sales team in Vineland New Jersey, he is settling in well with his family in their new home and already proving to be a valuable addition to the team.

He joins the experienced sales team of John Steelman with over 30 years Lattimer experience, and Mick Clark, who joined Lattimer 10 years ago from a senior position in the Glass Container manufacturing industry.

Mick is now heading up the Lattimer US operation following the retirement of Steve Abernathy and is looking forward to the challenge of continuing to drive the business forward, ensuring that Lattimer US remain the number one supplier of IS variable equipment in the United States.



John Steelman



Mick Clark



www.lattimer.com



Lattimer

79-83 Shakespeare Street
Southport, Merseyside
England PR8 5AP

Tel: +44 (0) 1704 535040

Fax: +44 (0) 1704 541046

Email: sales@lattimer.com



Lattimer

3603 North Mill Road
Vineland
New Jersey 08360, USA

Tel: +1 (856) 691 2203

Fax: +1 (856) 691 5509

Email: salesamericas@lattimer.com



THE QUEEN'S AWARDS
FOR ENTERPRISE
INTERNATIONAL TRADE
2018